

# 2017 DORP Report for Mahoning Unlimited Classroom

IRN: 148999  
School Type: High School

Address: 7401 Market St RM 519  
Youngstown, OH 44512-5651

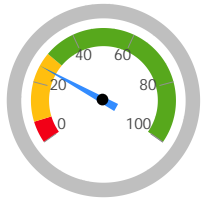
County: Mahoning  
ITC: ACCESS

## Graduation Rates

### 4-Year Graduation Rate

Applies to the Class of 2016, i.e. students who entered 9th grade in 2013 and graduated by 2016.

Class of 2016 Graduates:	Students Countable:	Graduation Rate:
13	51	25.5%



**RATING**

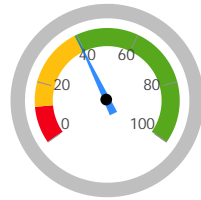
**Meets Standards**

Exceeds	36.0-100.0%
Meets	8.0-35.9%
Does Not Meet	0.0-7.9%

### 5-Year Graduation Rate

Applies to the Class of 2015, i.e. students who entered 9th grade in 2012 and graduated by 2016.

Class of 2015 Graduates:	Students Countable:	Graduation Rate:
27	68	39.7%



**RATING**

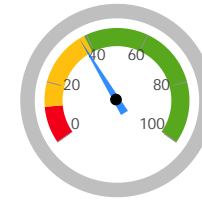
**Meets Standards**

Exceeds	40.0-100.0%
Meets	12.0-39.9%
Does Not Meet	0.0-11.9%

### 6-Year Graduation Rate

Applies to the Class of 2014, i.e. students who entered 9th grade in 2011 and graduated by 2016.

Class of 2014 Graduates:	Students Countable:	Graduation Rate:
24	64	37.5%



**RATING**

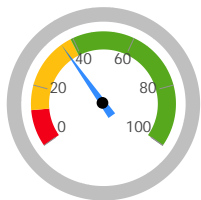
**Meets Standards**

Exceeds	40.0-100.0%
Meets	12.0-39.9%
Does Not Meet	0.0-11.9%

### 7-Year Graduation Rate

Applies to the Class of 2013, i.e. students who entered the 9th grade in 2010 and graduated by 2016.

Class of 2013 Graduates:	Students Countable:	Graduation Rate:
19	53	35.8%



**RATING**

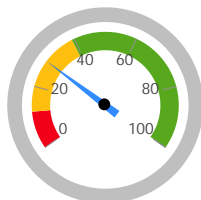
**Meets Standards**

Exceeds	40.0-100.0%
Meets	12.0-39.9%
Does Not Meet	0.0-11.9%

### 8-Year Graduation Rate

Applies to the Class of 2012, i.e. students who entered the 9th grade in 2009 and graduated by 2016.

Class of 2012 Graduates:	Students Countable:	Graduation Rate:
19	66	28.8%



**RATING**

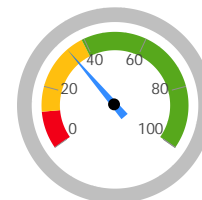
**Meets Standards**

Exceeds	40.0-100.0%
Meets	12.0-39.9%
Does Not Meet	0.0-11.9%

### Combined Graduation Rate

The weighted average of the five individual graduation rates.

Combined Graduates:	Combined Students:	Graduation Rate:
102	302	33.8%



**RATING**

**Meets Standards**

Exceeds	40.0-100.0%
Meets	12.0-39.9%
Does Not Meet	0.0-11.9%

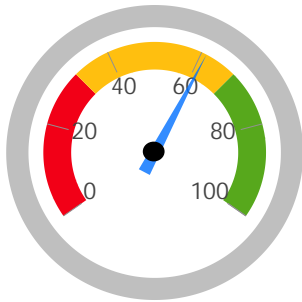
### High School Assessment Test Passage Rate

The test passage rate is the percent of students in 12th grade or nearing 22 years old who have passed all required high school assessments.

Students in the School for a Full Academic Year:  
18

Students who Passed all Five OGT Tests #:  
11

Students who Passed all Five OGT Tests:  
61.1%



Exceeds	68.0-100.0%
Meets	32.0-67.9%
Does Not Meet	0.0-31.9%

RATING
Meets Standards

### Progress

This measures the progress for all students in math and reading.

Progress Score		
Reading	Mathematics	Overall
Not Rated	Not Rated	Not Rated

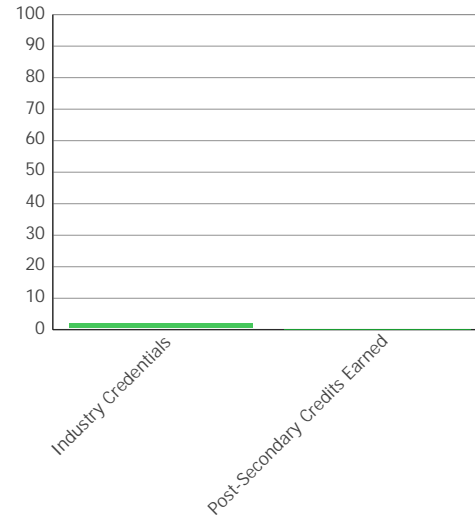
Exceeds	2.00 and up
Meets	-2.00 to 1.99
Does Not Meet	below -2.00

RATING
Not Rated

### Other Student Outcome Data

Denominator (Graduation Cohort for 2016): 119

	Student #	Pct
Industry Credentials	2	1.7
Post-Secondary Credits Earned	0	0.0



### Annual Measurable Objectives

The Annual Measurable Objectives score is determined using multiple data points. For each student subgroup, the school's results are compared to the statewide Annual Measurable Objectives (AMOs). "Points" are earned based on how the school compared to the AMO, to their results last year (improvement), and to how far they were from meeting the AMO (the "gap"). These points are averaged to determine a preliminary score and rating, which may be demoted if certain minimum performance requirements are not met.

### AMO - English Language Arts Proficiency

Subgroup	Metrics	Took Test #	STR Prof #	ALT Prof #	ALT Cap Demote #	Net Prof #	Prof %	Goal	Gap	Took Test LY #	STR Prof LY #	ALT Prof LY #	Net Prof LY #	Prof LY %	Improve	Points
All Students		42	26	0	0	26	61.9	89.4	27.5	31	17	0	17	54.8	7.1	25.8
Economically Disadvantaged		20	10	0	0	10	NR	89.4	NR	20	8	0	8	NR	NR	NR
Asian or Pacific Islander		0	0	0	0	0	NR	89.4	NR	0	0	0	0	NR	NR	NR
African American		10	7	0	0	7	NR	89.4	NR	1	0	0	0	NR	NR	NR
American Indian or Alaskan Native		0	0	0	0	0	NR	89.4	NR	0	0	0	0	NR	NR	NR
Hispanic		2	1	0	0	1	NR	89.4	NR	2	1	0	1	NR	NR	NR
Multiracial		2	2	0	0	2	NR	89.4	NR	1	1	0	1	NR	NR	NR
White		28	16	0	0	16	NR	89.4	NR	27	15	0	15	NR	NR	NR
IEP		13	6	0	0	6	NR	89.4	NR	12	5	0	5	NR	NR	NR
LEP		0	0	0	0	0	NR	89.4	NR	0	0	0	0	NR	NR	NR

Total of Subgroup Points: 25.8

Possible Subgroup Points: 100.0

English Language Arts Points Earned (Total / Possible): 25.8

1. If [Prof %] is greater than the Goal, then 100.0 points are earned and the Gap is not applicable (N/A). If not, the Gap is the difference between [Prof %] and the Goal. Subgroups of less than 30 students are Not Rated (NR).
2. Improvement from last year's result is [Prof %] minus [Prof LY %]. If Improvement is greater than the Gap, then 100.0 points are earned.
3. Otherwise, partial points are awarded using the formula (Improvement / Gap) \* 100. It is impossible to earn more than 100 or less than zero points.
4. After all subgroup points have been calculated, they are added together. The total is divided by the maximum points possible (100 x number of subgroups that were not NR) to determine the final points for Reading.

### AMO - Math Proficiency

Subgroup	Metrics	Took Test #	STR Prof #	ALT Prof #	ALT Cap Demote #	Net Prof #	Prof %	Goal	Gap	Took Test LY #	STR Prof LY #	ALT Prof LY #	Net Prof LY #	Prof LY %	Improve	Points
All Students		42	16	0	0	16	38.1	86.5	48.4	30	13	0	13	43.3	-5.2	0.0
Economically Disadvantaged		20	5	0	0	5	NR	86.5	NR	19	5	0	5	NR	NR	NR
Asian or Pacific Islander		0	0	0	0	0	NR	86.5	NR	0	0	0	0	NR	NR	NR
African American		10	5	0	0	5	NR	86.5	NR	1	0	0	0	NR	NR	NR
American Indian or Alaskan Native		0	0	0	0	0	NR	86.5	NR	0	0	0	0	NR	NR	NR
Hispanic		2	0	0	0	0	NR	86.5	NR	2	1	0	1	NR	NR	NR
Multiracial		2	2	0	0	2	NR	86.5	NR	1	0	0	0	NR	NR	NR
White		28	9	0	0	9	NR	86.5	NR	26	12	0	12	NR	NR	NR
IEP		14	1	0	0	1	NR	86.5	NR	11	1	0	1	NR	NR	NR
LEP		0	0	0	0	0	NR	86.5	NR	0	0	0	0	NR	NR	NR

Total of Subgroup Points: 0.0  
 Possible Subgroup Points: 100.0  
 Math Points Earned (Total / Possible): 0.0

1. If [Prof %] is greater than the Goal, then 100.0 points are earned and the Gap is not applicable (N/A). If not, the Gap is the difference between [Prof %] and the Goal. Subgroups of less than 30 students are Not Rated (NR).
2. Improvement from last year's result is [Prof %] minus [Prof LY %]. If Improvement is greater than the Gap, then 100.0 points are earned.
3. Otherwise, partial points are awarded using the formula (Improvement / Gap) \* 100. It is impossible to earn more than 100 or less than zero points.
4. After all subgroup points have been calculated, they are added together. The total is divided by the maximum points possible (100 x number of subgroups that were not NR) to determine the final points for Math.

### AMO - Graduation Rate

Subgroup	Metrics	Grads #	Non-Grads #	Cohort Students #	Grad Rate %	Goal	Gap	Grads LY #	Non-Grads LY #	Cohort Students # LY	Grad Rate LY %	Improve	Points
All Students		13	38	51	25.5	85.1	59.6	19	43	62	30.6	-5.1	0.0
Economically Disadvantaged		3	25	28	NR	85.1	NR	12	27	39	30.8	NR	NR
Asian or Pacific Islander		0	0	0	NR	85.1	NR	0	0	0	NR	NR	NR
African American		3	6	9	NR	85.1	NR	3	5	8	NR	NR	NR
American Indian or Alaskan Native		0	0	0	NR	85.1	NR	0	0	0	NR	NR	NR
Hispanic		2	1	3	NR	85.1	NR	2	3	5	NR	NR	NR
Multiracial		0	2	2	NR	85.1	NR	1	6	7	NR	NR	NR
White		8	29	37	21.6	85.1	63.5	13	29	42	31.0	-9.4	0.0
IEP		0	10	10	NR	85.1	NR	2	10	12	NR	NR	NR
LEP		0	0	0	NR	85.1	NR	0	0	0	NR	NR	NR

Total of Subgroup Points: 0.0

Possible Subgroup Points: 200.0

Graduation Rate Points Earned (Total / Possible): 0.0

1. If [Grad Rate %] is greater than the Goal, then 100.0 points are earned and the Gap is not applicable (N/A). If not, the Gap is the difference between [Grad Rate %] and the Goal. Subgroups of less than 30 students are Not Rated (NR).
2. Improvement from last year's result is [Grad Rate %] minus [Grad Rate LY %]. If Improvement is greater than the Gap, then 100.0 points are earned.
3. Otherwise, partial points are awarded using the formula (Improvement / Gap) \* 100. It is impossible to earn more than 100 or less than zero points.
4. After all subgroup points have been calculated, they are added together. The total is divided by the maximum points possible (100 x number of subgroups that were not NR) to determine the final points for Graduation Rate.

### AMO - Preliminary Score

The preliminary score is the average of the English Language Arts, Math, and Graduation Rate from the preceding pages. The result is applied to the rating scale to determine a preliminary rating.

English Language Arts Points:	25.8	Rating Scale:	Preliminary Rating:
Math Points:	0.0	Exceeds Standards 36.0 - 100.0%	<b>Meets Standards</b>
Graduation Rate Points:	0.0	Meets Standards 1.0 - 35.9%	
Preliminary Score:	<u>8.6</u>	Does Not Meet Standards 0.0 - 0.9%	

Note: The Preliminary Rating is shown for informational purposes only. Ratings will not be officially assigned until the 2014 Report Card is released.

### AMO - Rating Demotions

#### Participation Rates

The minimum Participation Rate is 95.0%. If any subgroup does not meet this requirement in either English Language Arts or Math, a rating demotion occurs. Participation Rate is not calculated if a subgroup does not have at least 40 students required to take the test.

#### English Language Arts

Subgroup	Metrics	Required to Participate #	Participated #	Participation Rate %
All Students		55	49	89.1
Economically Disadvantaged		31	27	NR
Asian or Pacific Islander		0	0	NR
African American		10	9	NR
American Indian or Alaskan Native		0	0	NR
Hispanic		2	2	NR
Multiracial		3	2	NR
White		40	36	90.0
IEP		18	15	NR
LEP		0	0	NR

#### Math

Subgroup	Metrics	Required to Participate #	Participated #	Participation Rate %
All Students		56	51	91.1
Economically Disadvantaged		33	29	NR
Asian or Pacific Islander		0	0	NR
African American		11	10	NR
American Indian or Alaskan Native		0	0	NR
Hispanic		2	2	NR
Multiracial		3	2	NR
White		40	37	92.5
IEP		18	16	NR
LEP		0	0	NR

### AMO - Final Score and Rating

If a rating demotion is required, then the preliminary score is reduced by 5.0 points to determine the final score. The final score is applied to the rating scale to determine the final rating.

Preliminary Rating:	Demotion Required?	Final Score:	Rating Scale:	<div style="background-color: #1a3d4d; color: white; padding: 5px; font-weight: bold;">RATING</div> <div style="font-size: 24px; font-weight: bold; margin-top: 10px;">Meets Standards</div>
Meets Standards	Yes	3.6	Exceeds Standards 36.0 - 100.0%	
			Meets Standards 1.0 - 35.9%	
			Does Not Meet 0.0 - 0.9% Standards	

### Overall Rating for the Dropout Recovery School

	Exceeds	Meets	Does Not Meet
Combined Graduation Rate:	30	20	0
High School Assessment Test Passage:	20	10	0
Progress:	NR	NR	NR
Annual Measurable Objectives:	20	10	0

40 points earned out of a possible 70 = 57.1%

A school that improves its High School Assessment Test Passage Rate and the 4-year, 5-year, 6-year, 7-year, and 8-year Graduation Rates by 10% or more in both the current and prior two year comparison periods can be rated no lower than Meets Expectations.

Rating Scale:

Exceeds Standards 80.0 - 100.0%

Meets Standards 40.0 - 79.9%

Does Not Meet 0.0 - 39.9% Standards

RATING

Meets Standards

[Click here](#) to see the Secure Data Center - Status of Reports report